





# REGLPORTS

FINAL NEWSLETTER

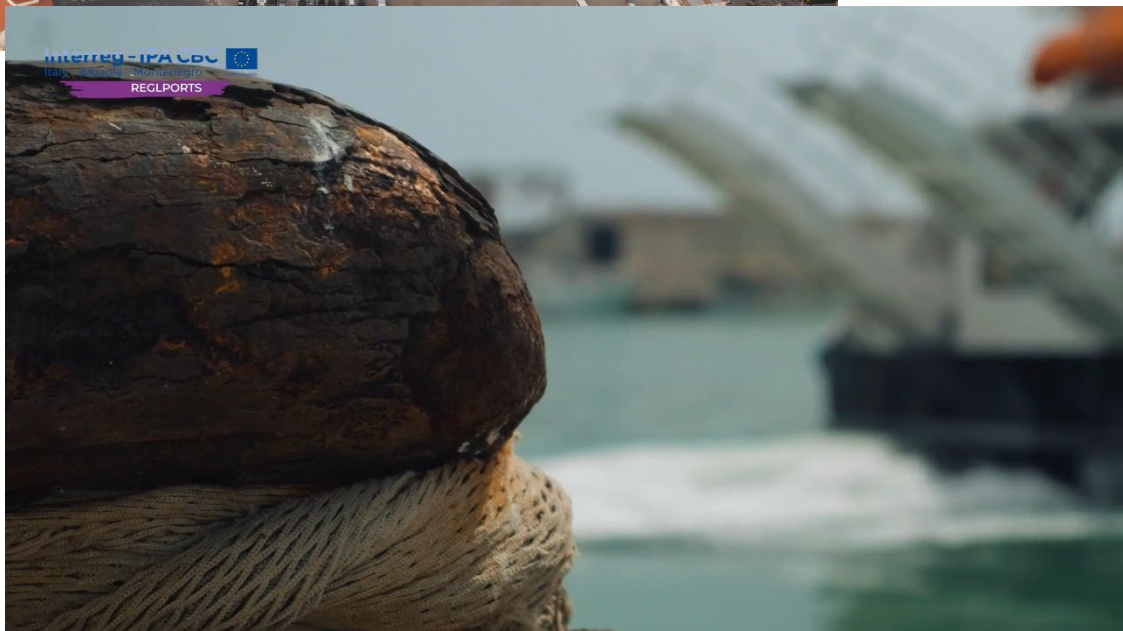
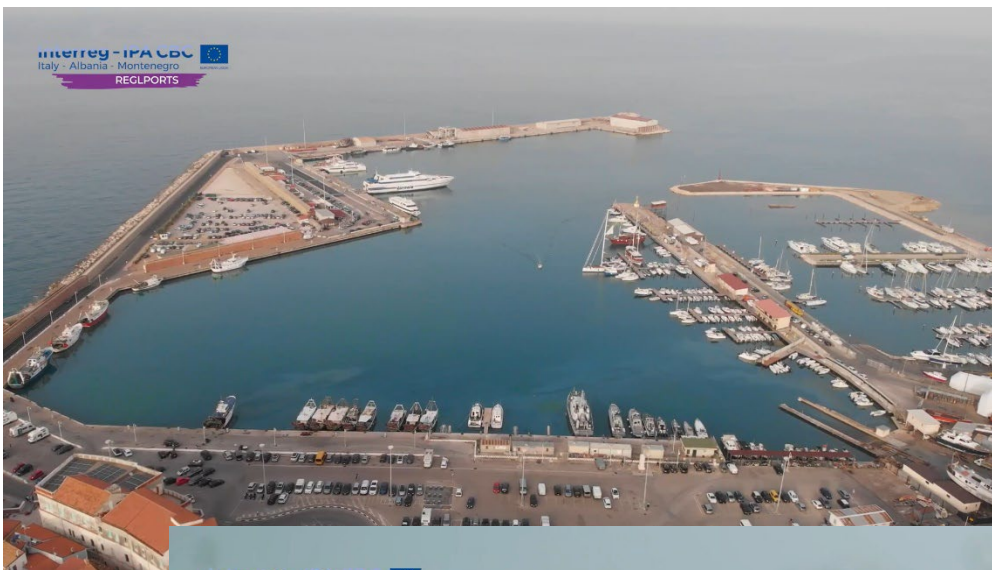


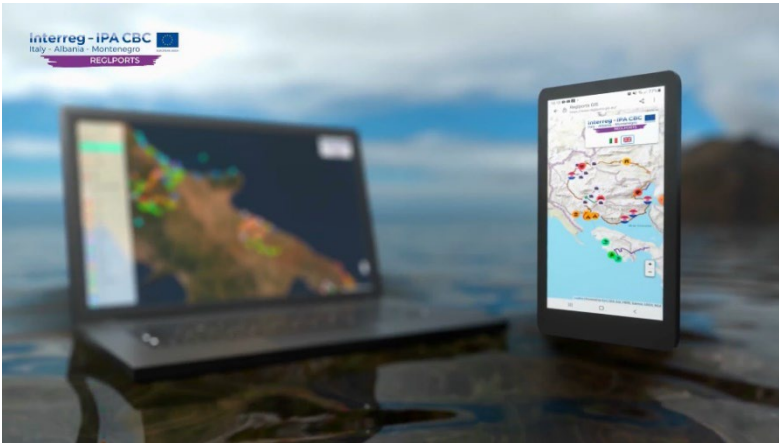
**The project is going to end and here's some MAIN RESULTS activity DONE!**

The main results of the project here presented  
**NEWS!!! REGLPORTS VIDEO!**

We present you the video of REGLPORTS Because if for many people a harbour is a starting point or a destination.

**To us it is a point of pride!!**





Here a text pillow from the video:

- For many people a harbor is a starting point, to other it is a destination
- For someone else it is probably only an infrastructure
- of course, a harbor is all of this, but it can be much more.
- A harbor is a new place welcome to its visitors, the first meeting with sounds, scents and colors of the lands.

This is how the Reglports project sees its harbors, our goal is to improve the experience of the nautical tourists. The purpose is to assure a network of high-quality services for 21 small and medium sizes harbor reality and to guide the tourists during their first steps on the Italian, Albanian and Montenegrin quays. ""

## NEWS!!! TERMOLI Wheatear Station POWER UP!

Termoli weather station has been equipped with an addition of ondametric sensor and including a water quality probe on the harbor dock, to be integrated into the primary network of civil protection of the Molise Region, thanks to the REGLPORTS project. The meteorological station has been

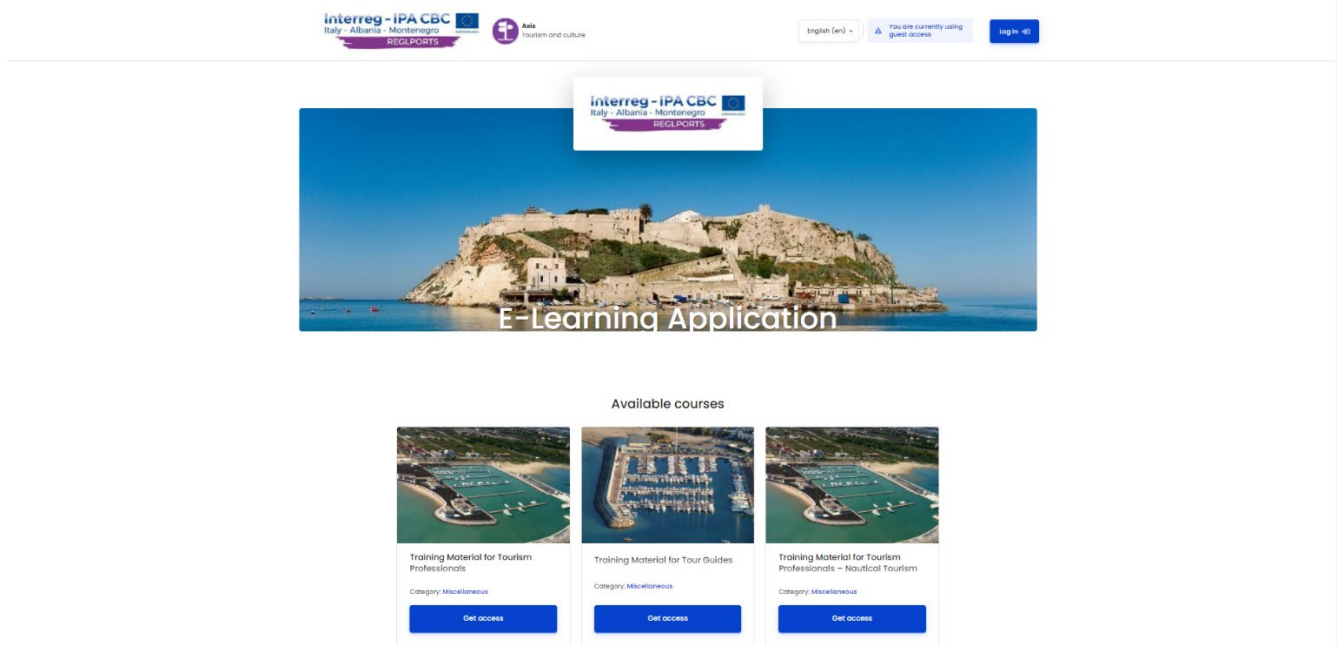


upgraded in order to be able to monitor also weather parameters (temperature, humidity, atmospheric pressure, wind speed and direction), water quality parameters (pH, conductivity, water temperature, dissolved oxygen, redox potential and turbidity) and sea state parameters, such as average sea height, average height of single waves, average height of the most significant waves, average period of the most



significant waves, highest wave, average period of the highest wave.

## NEWS!!! REGLPORIS E – LEARNING course!



The eLearning platforms is meant to give useful information to which intent to develop and invest on tourism and nautical tourism as a Tourism Professionals or as a tourism Guide with the creation of tree different courses:

- The Training Material for Tourism Professionals
- Training Material for Tour Guides
- Training Material for Tourism Professionals – Nautical Tourism

This training material is aimed to two categories:

a) Unemployed local people who wish to acquire new skills and gain knowledge as REGLPORIS Tourist Guides,

(b) established professional Tourist Guides, who wish to upgrade their services and skills. In addition: The e-learning platform is available to all participants and will include the electronic version of the Training Material intended for the implementation of the Online Workshops and the printed version will be given to the participants of the live Workshops

### 2.3.1 The Training Material for Tourism Professionals

#### Content

This module offers information on Tourism as an economic booster that has contributed to the economic growth of many nations.



- Tourist industry: collaboration and cooperation between tour operators, travel agents and visitors.
- Key components of tourism; destinations, attractions, places, lodging, and all ancillary services.

Structure

1. Historical development of tourism.
2. Structure of the Modern Tourism Industry
3. Special and Alternative Forms of Tourism.
4. Tourism Development in the Intervention Area
5. Tourism and Economy

2.3.2 The Training Material for Tour Guides structures

Content

The guide contains the main Tourist Guides competencies, Tourist Guide is the focal point of attention for any visitor/tourist on a tour. Some professional standards every Tourist Guide should have been for example, punctuality, quick-thinking and good organization.

Principles for every Tourist Guide:



Structure

1. REGLPORIS Implementation Context
2. Implementation Proposal
3. General Guideline
4. Tour Guiding Ethics
5. Alternative Forms of Tourism and Nautical Tourism
6. Development of Modern Tourism
7. REGLPORIS Tools

2.3.3 The Training Material for Tourism Professionals – Nautical Tourism structures

Content

Nautical Tourism is an industry that is still growing at an increasing pace. In this guide we try to analyze the principles of Nautical Tourism, examine its industries, and explain the industry’s growth and business opportunities. There seems to be little research on nautical tourism, especially at academia, and even less specialists are interested in the nautical tourism phenomenon.

Structure

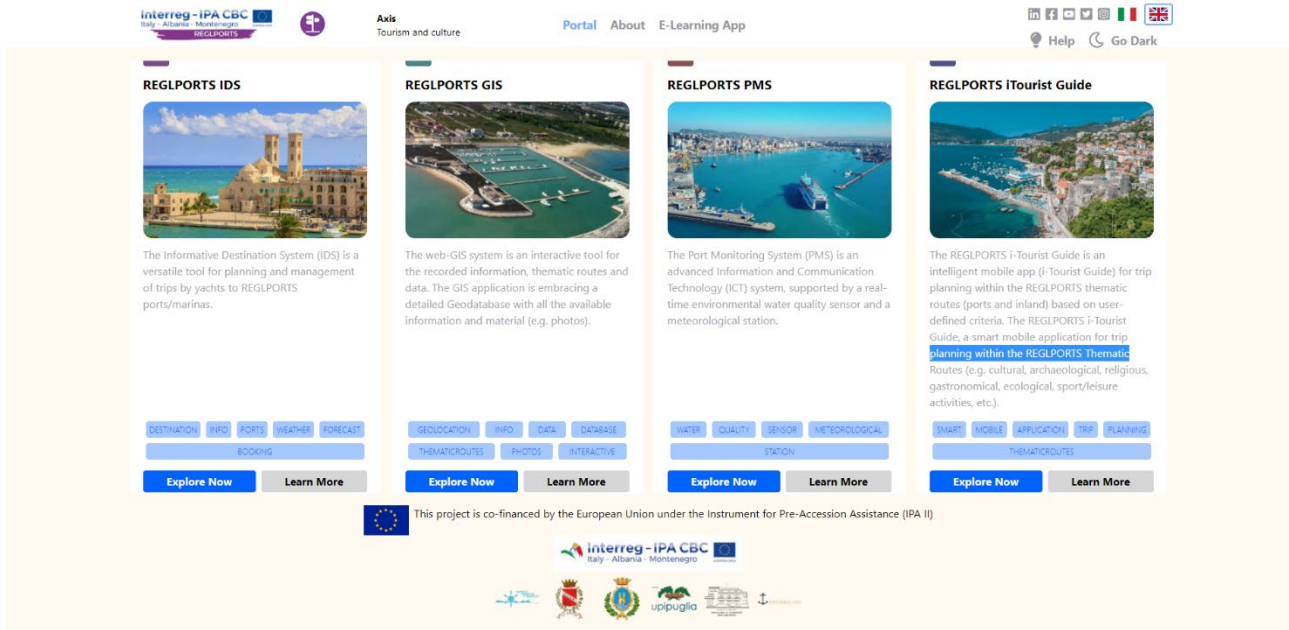
1. Nautical Tourism, Resources and Defining Factors
2. The Private Nautical Tourism Market
3. Institutional Framework of Maritime Tourism
4. The Markets of Nautical Tourism in Europe
5. Challenges And a New

Framework for Coastal and Maritime Tourism in Europe 6. Opportunities for Market Development in Nautical Tourism 7. Maritime Industry Trends 8. Investments in The Nautical Tourism Industry

**News!!! REGLPORTS MILESTONES!!!**

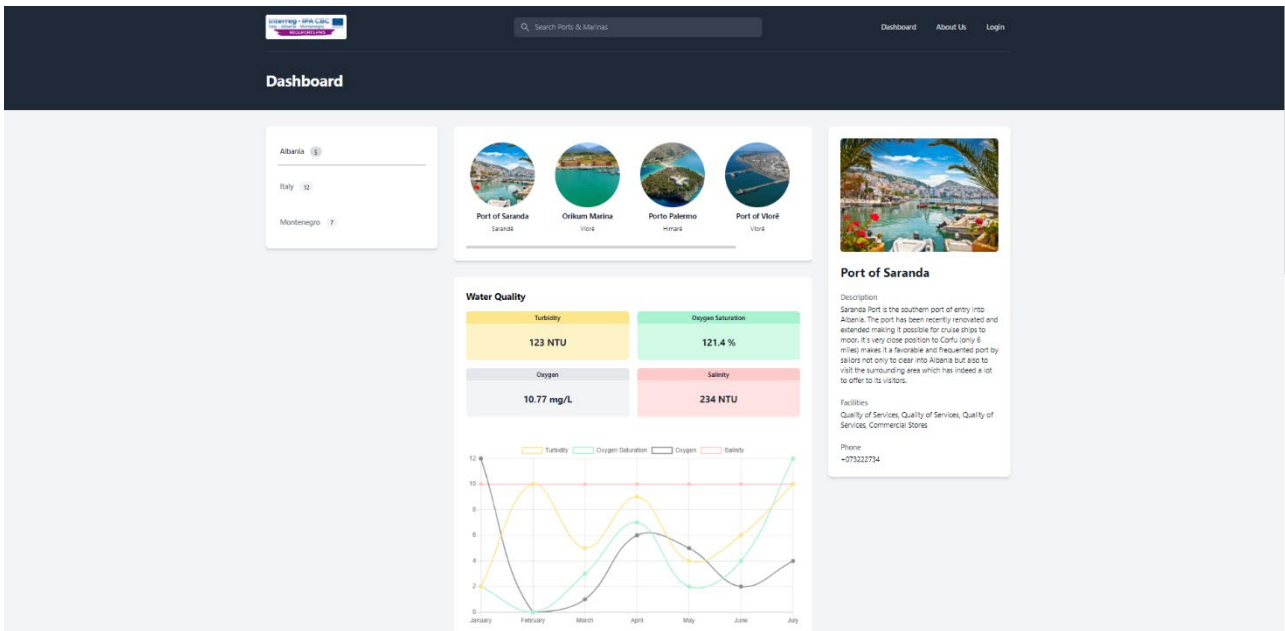
**WEB PORTAL iNatural tourism, ready to share place and story, ready to share our ports and explore inland areas!**

The web portal contain: *REGLPORTS PMS, REGLPORTS GIS, REGLPORTS IDS The Informative Destination System, REGLPORTS iTourist Guide.*



- **REGLPORTS The Port Monitoring System**





The Port Monitoring System (PMS) is an advanced Information and Communication Technology (ICT) system, supported by a real-time environmental water quality sensor and a meteorological station.

Two selected pilot ports will be equipped with a Port Monitoring System (PMS) that will monitor in real-time the quality status of seawater, thus securing environmental sustainability. The Port Monitoring System (PMS) as a sub-system of the web-portal or stand-alone application, includes real data processing, monitoring and alert flagging, definition of trend, etc.

• **REGLPORTS GIS**





The web-GIS system is an interactive tool for the recorded information, thematic routes and data. The GIS application is embracing:

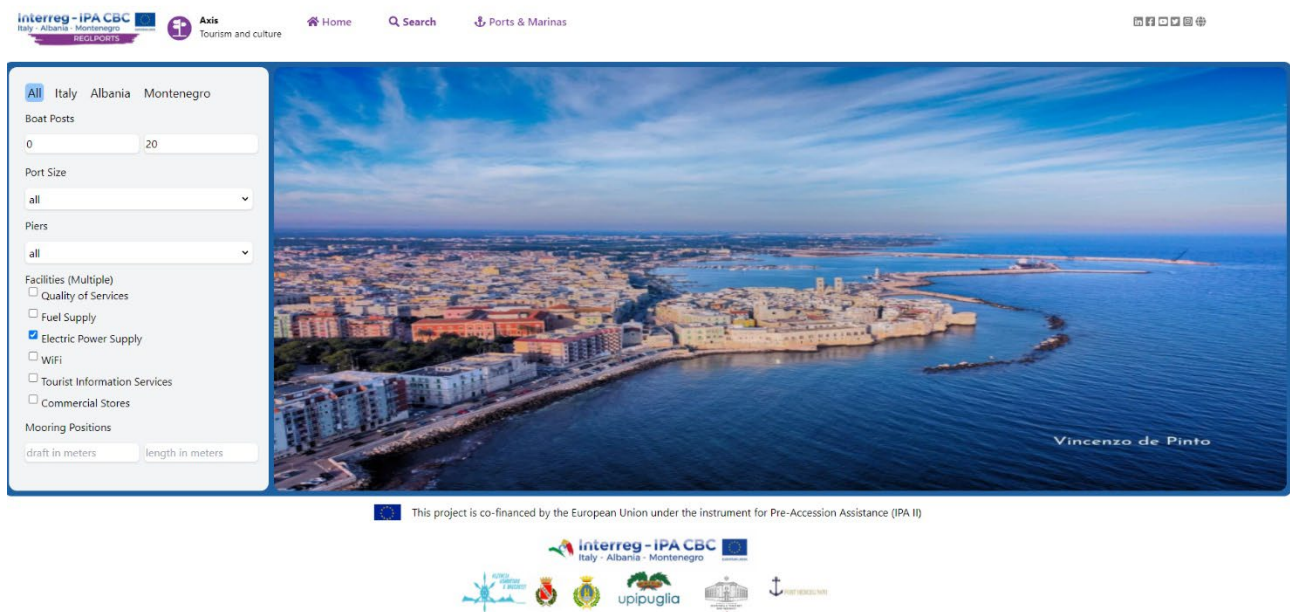
- (a) an interactive Geodatabase with all the available information (characteristics, photos, etc.)
- (b) the REGLPORTE Thematic Routes. The REGLPORTE GIS application is accessible through the REGLPORTE Web Portal and the i-Tourist Guide.

A web-based application with all the expected and typical GIS capabilities:

- User friendly interface
- Analysis and distance calculation
- Manage and present spatial or geographic data
- Itinerary creation

The platform hosts a comprehensive user tutorial and help function Works in tantum with the IDS, PMS and i-Tourist Guides Hosts the Projects Thematic Routes

- **REGLPORTE IDS The Informative Destination System (IDS)**

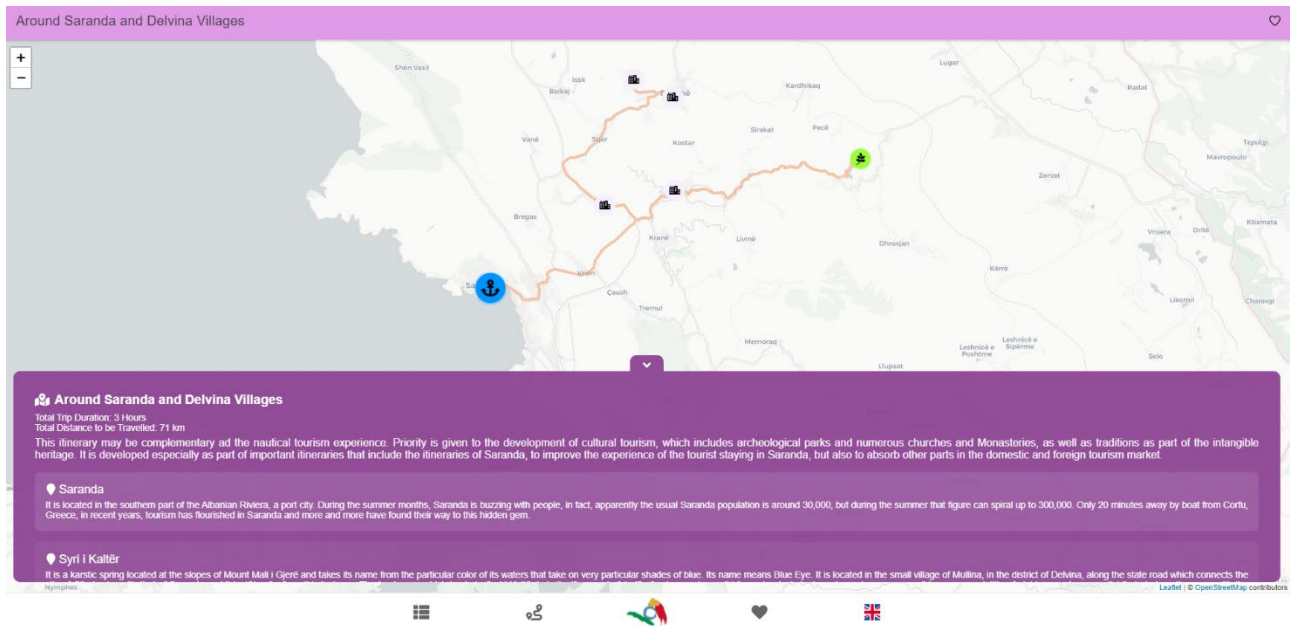


The Informative Destination System (IDS) is a versatile tool for planning and management of trips by yachts to REGLPORTE ports/marinas.

The Informative Destination System (IDS), is an ICT tool that allows the user (tourist) to acquire useful information about the ports/marinas they wish to sail to, including: Construction characteristics (e.g. carrying capacity, piers/ jetties and other artificial structures, depth, port dimensions, etc.), facilities (e.g. fuel supply, electric power supply, Wi-Fi/Internet, tourist information service, commercial stores, etc.), local meteorological parameters (e.g. temperature, barometric pressure, wind speed, wind direction) provided by

weather forecast and alerts (provided by third parties e.g. National Meteorological Services etc.). Additionally, through IDS the user has access to an on-line berthing system, providing information about the available mooring positions, a berthing cost calculator tool and mooring position booking tool. The IDS system will be web-based and hosted in the REGLPORTS Web Portal and at the Intelligent e-Tourist Guide.

- **REGLPORTS iTourist Guide**



The REGLPORTS i-Tourist Guide is an intelligent mobile app (i-Tourist Guide) for trip planning within the REGLPORTS thematic routes (ports and inland) based on user-defined criteria. The REGLPORTS i-Tourist Guide, a smart mobile application for trip planning within the REGLPORTS Thematic Routes (e.g. cultural, archaeological, religious, gastronomical, ecological, sport/leisure activities, etc.).

**Link To REGLPORTS PORTAL, WEBSITE and VIDEO**

<https://reglports.italy-albania-montenegro.eu/>

<https://reglports.eu/>

<https://reglports.italy-albania-montenegro.eu/reglports-web-gis>

<https://reglports.eu/elearning/enrol/index.php?id=5>

<https://reglports-gis.eu/>

